

Ellen Lindner

Adventure Quilter

Floral Improv

Everything you need to get ready for a great virtual class

I'm really looking forward to our Floral Improv class, coming up soon! We will have a great time together, even though we'll all be in front of our computer screens.

This is what you need to do to prepare.

- Gather your supplies, see page 3. Each poppy requires two fabrics, so you may want to select some potential pairs. Choose a background color that will provide contrast with both your daisy and poppy fabrics.
- It's helpful to see an example project while you're working. Therefore, print out the next page in color and have it handy during class.
- Where's the pattern? There is none for this class as you'll be learning to make flowers without one!

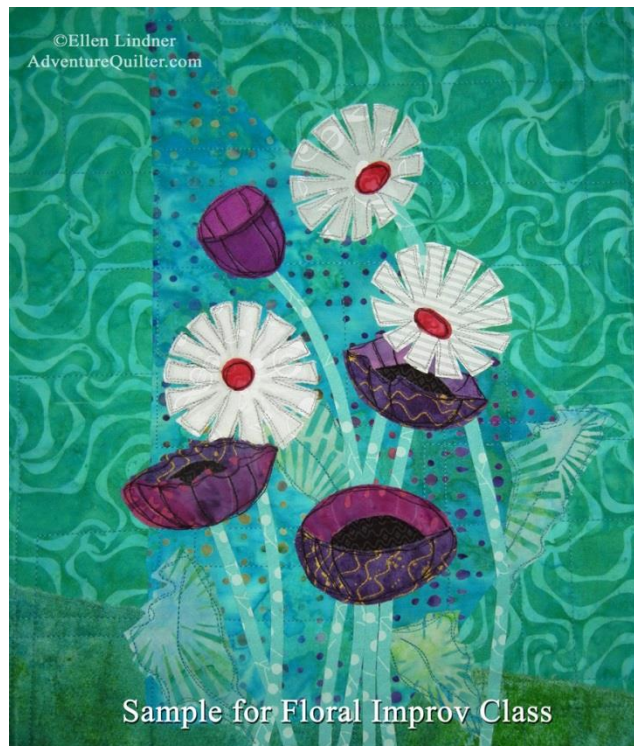
I'll see you soon!



www.AdventureQuilter.com

Ellen Lindner

Adventure Quilter



Floral Improv Supply List

©2018 Ellen Lindner

We'll cover a lot of ground in this class. Please read the supply list carefully and complete the class preparations so your time will be efficient.

Your class project will measure about 11" x 14" and can be either vertical or horizontal.

Background fabric, 13" x 16"

Backing fabric, 13" x 16"

Batting, 13" x 16"

One strip of fusible web, 12" x 1 1/2" (plus fusible web as needed for flowers, stems, and leaves)

Black thread, plus threads to match background, flowers, and flower centers

General sewing supplies to include: heat resistant straight pins, pencil, pen/marker, rotary cutting tools (small okay), and temporary fabric marking pencils/pens for both light and dark fabrics

Silicone/Teflon pressing sheet or parchment paper

Glue stick or other fabric glue

NOTE: All flower, stem, and leaf fabrics should have FUSIBLE WEB ATTACHED to the back before class.*

Poppy fabrics: at least ten coordinating pieces, each about 4" square. Fabrics can be repeated.

Daisy fabrics: at least five coordinating pieces, each about 4" square. Fabrics can be repeated.

One stem and one leaf fabric, about 8" x 10" for each.**

Several scraps of fabrics that might work for flower centers. Include some very darks, and complementary/opposite colors of the flowers and background colors.

Sewing machine and presser foot suitable for free motion stitching. *Students must be familiar with free motion stitching and with their sewing machines.*

*Popular fusible web brands are Misty Fuse, Wonder Under, and Steam-A-Seam2. Read the package instructions for fusing details.

Ellen Lindner

Adventure Quilter

** Good stem and leaf fabric choices are lighter or darker versions of the background color. (Not necessarily green!)

Class prep:

- Ensure all flower, leaf, and stem fabrics have fusible web on the back. If your fusible web has a paper component, leave it in place.
- Layer batting and background fabric and quilt them in your desired pattern. (Leave the backing fabric off. Your machine won't mind.)

Suggested quilting pattern: straight lines that turn at right angles across the piece. Study Ellen's online examples at

http://adventurequilter.com/main_page/live-classes/floral-improv/

Suggested quilting thread color:

Something that provides contrast. Maybe one of your flower colors.

These are suggestions. Pick the quilting pattern and thread that you like!

See sample Floral Improv quilts at

http://adventurequilter.com/main_page/live-classes/floral-improv/floral-improv-gallery/